



cokin[®]
image.imagine

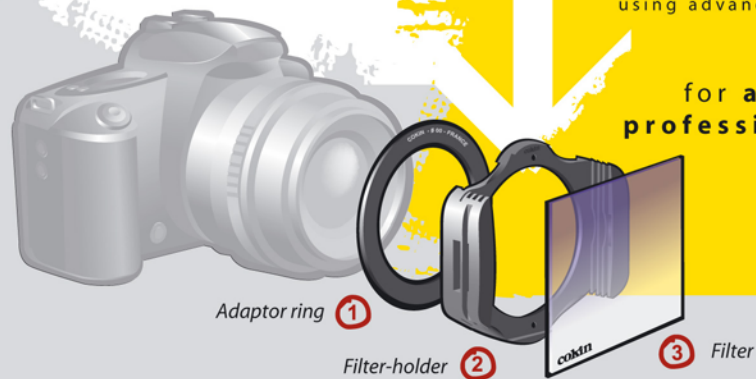


Filter
solutions

DIGITAL + FILM



Filter solutions



- Control light and colour**
directly on your RAW images at time of shooting ;
- Keep the quality of your images**
without excessive post production work ;
- Create specific effects**
saving time on your computer.

**A new concept
of image creation**
using advanced technologies

for amateurs and
professionals.

image.imagine

> THE COKIN SYSTEM

On the market for over 40 years and distributed in more than 100 countries, the COKIN CREATIVE Filter System launched a new concept of **image creation**.

Using the most **advanced technologies**, the COKIN SYSTEM is designed for all photographers profiles, whether they are **amateurs** or **professionals**. Key words are **simplicity** and **rapidity of use**, leaving full room for your individual **inspiration** and **creativity**. The efficiency of the COKIN System has already convinced millions of photographers worldwide, you are the next !

Photography is Art... the Photographer is the artist...
The **filter** is only the **brush** !



image.imagine

> COKIN + COMPUTER

Digital Professional photographers and keen amateurs highly value the RAW capture as they well know that any software manipulation would result in a loss of quality of their images. The same reckon that many of the COKIN effects can't be produced on computer whatever the performance of the software. This is particularly true with all effects related to light management (light polarization, light balance, brightness control, etc) where the quality of the image is fully related to light expertise at time shooting.

This is why most of them now **combine** the use of **COKIN filters** with **post-production** work. Filters not only offer an indispensable support but also allow a considerable amount of time saving in post production software job.

INTRO
COLOUR FILTERS
GRADUATED SPOTS
DIFFUSERS
POLARIZERS
OPTICAL EFFECTS
SPECIAL EFFECTS
THE SYSTEM
ACCESSORIES
THE COKIN RANGE

DIGITAL + FILM

2

3



> COLOUR FILTERS

The Cokin **Colour filters** are **technical tools**. They are for you if you want to :

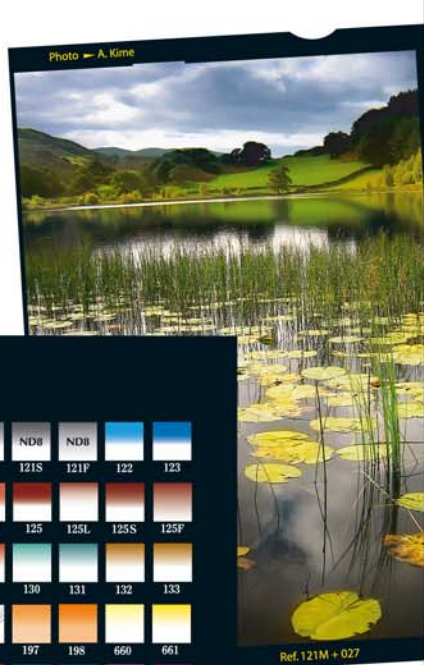
- > **warm up** your portrait shots ;
- > **correct** colour dominants ;
- > **diminish** excess luminosity ;
- > **control** the greenish tones of neonlights ;
- > **create** night effects in broad daylight ;
- > **select** grey tones adapted to your theme in black and white photography ;
- > **stop** uv rays ;
- > **play** infrared in both analog or digital.

image.imagine

001	002	003	004	005	006	007	020
008	00C	02A	02B	02C	01A	01B	01C
021	022	023	024	025	026	027	028
05 A	05B	05C	01D	FLW	0TEF	01Z	
029	030	031	035	036	037	039	045
FLD			ND2	ND4	ND8	ND100	NDX
046	047	050	152	153	154	155	156
UVN	UVY	1B	CC 05C	CC 10C	CC 20C	CC 30C	CC 40C
230	231	232	700	701	703	705	707
CC 50C	CC 05M	CC 10M	CC 20M	CC 30M	CC 40M	CC 50M	CC 05Y
709	710	711	713	715	717	719	720
CC 10Y	CC 20Y	CC 30Y	CC 40Y	CC 50Y			
721	723	725	727	729			



INTRO
 COLOUR FILTERS
 GRADUATED
 CENTER SPOTS
 DIFFUSERS
 POLARIZERS
 OPTICAL EFFECTS
 SPECIAL EFFECTS
 THE SYSTEM
 ACCESSORIES
 THE COKIN RANGE



INTRO
COLOUR FILTERS
GRADUATED
CENTER SPOTS
DIFFUSERS
POLARIZERS
OPTICAL EFFECTS
SPECIAL EFFECTS
THE SYSTEM
ACCESSORIES
THE CORN RANGE



> GRADUATED

COKIN **graduated** filters are precious tools for all lovers of landscape photography, for both artists and technical experts. They will help you to :

- > **re-establish** the balance between colours and reduce contrast between the different parts of your image ;
- > **colour** the skies according to your inspiration - blue, tobacco, fluo, mauve ;
- > **create** or **enhance** sunsets.

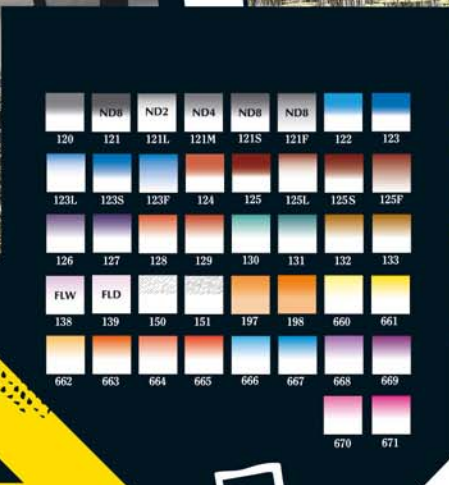


image imagine

6

7



> CENTER SPOTS

These filters maintain the clarity of the main subject and, at the same time, diffuse the surroundings :

- > **concentrates** attention on the subject, enhancing its importance ;
- > **progressively** softens foreground to background ;
- > **brings** a halo of colour to your pictures in harmony with the theme or atmosphere chosen.

image.imagine



Photo

Photo → L. Sierpe



Photo → P. Grateaud

Ref. 088

Ref. 072

Photo → A. Greco



INTRO
COLOUR FILTERS
GRADUATED
CENTER SPOTS
DIFFUSERS
POLARIZERS
OPTICAL EFFECTS
SPECIAL EFFECTS
THE SYSTEM
ACCESSORIES
THE CORN RANGE



Ref.830

Photo - A. Krme



Ref.145

Photo - A. Greco



Ref.697

Photo - A. Greco



> DIFFUSERS

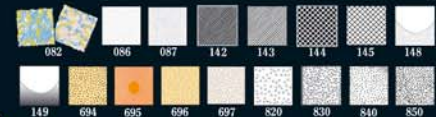
Cokin **Diffuser** and **Pastel** filters bring a gentle and romantic atmosphere to your images. They allow a more subtle interpretation of your subjects, far removed from aggressive lighting, bright colours and excessive contrast.

- > **softens**, controls, diminishes, lights and colours ;
- > **creates** romantic or dream atmospheres.



Ref.640

Photo - S. Del Greco



INTRO
 COLOUR FILTERS
 GRADUATED
 CENTER SPOTS
DIFFUSERS
 POLARIZERS
 OPTICAL EFFECTS
 SPECIAL EFFECTS
 THE SYSTEM
 ACCESSORIES
 THE CORN RANGE

10

image.imagine

11

DIGITAL + FILM



> POLARIZERS

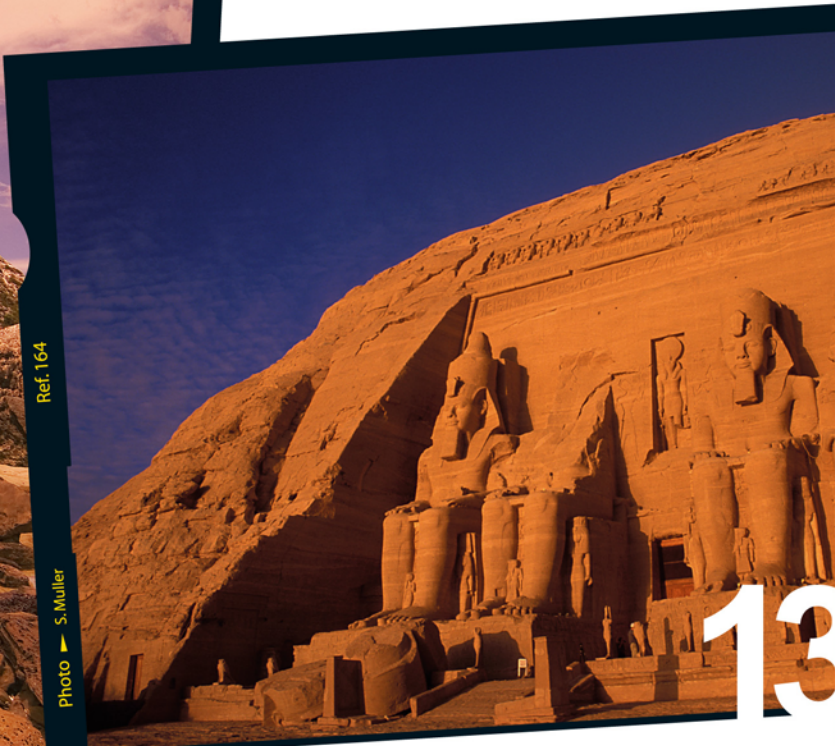
Circular or Linear Polarizers, Polacolors or Varicolors, all are high-tech filters which model and paint, thoughtfully, with light. They assist you to :

- > **enhance** the blue colour of your skies ;
- > **diminish** or **eliminate** or colour reflections on glass surface or water ;
- > **vary** the intensity of colours ;
- > **colour** background and foreground without affecting the other part of the image ;
- > **create** colour shades and specific tones.

image.imagine



12



INTRO
COLOUR FILTERS
GRADUATED
CENTER SPOTS
DIFFUSERS
POLARIZERS
OPTICAL EFFECTS
SPECIAL EFFECTS
THE SYSTEM
ACCESSORIES
THE CORIN RANGE

DIGITAL + FILM

13



> OPTICAL EFFECTS

These filters, in which optical effects predominate, have little or no effect on colours. They allow you to :

- > **transform** light sources into a shower of stars ;
- > create a dream atmosphere ;
- > have closer and sharper look at small details ;
- > **create** spectacular or humorous effects such as multi-parallel, mirage or extended images and reflections ;
- > **zoom** and movement effects.

image.imagine



Photo - J.M. Coulon

Ref. 217

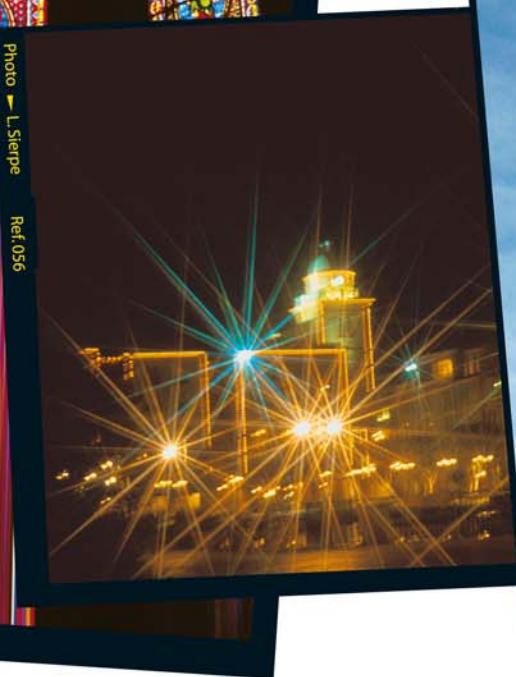


Photo - L.Sierpe

Ref. 056



Photo - L.Sierpe

Ref. 203

INTRO
COLOUR FILTERS
GRADUATED
CENTER SPOTS
DIFFUSERS
POLARIZERS
OPTICAL EFFECTS
SPECIAL EFFECTS
THE SYSTEM
ACCESSORIES
THE CORN RANGE

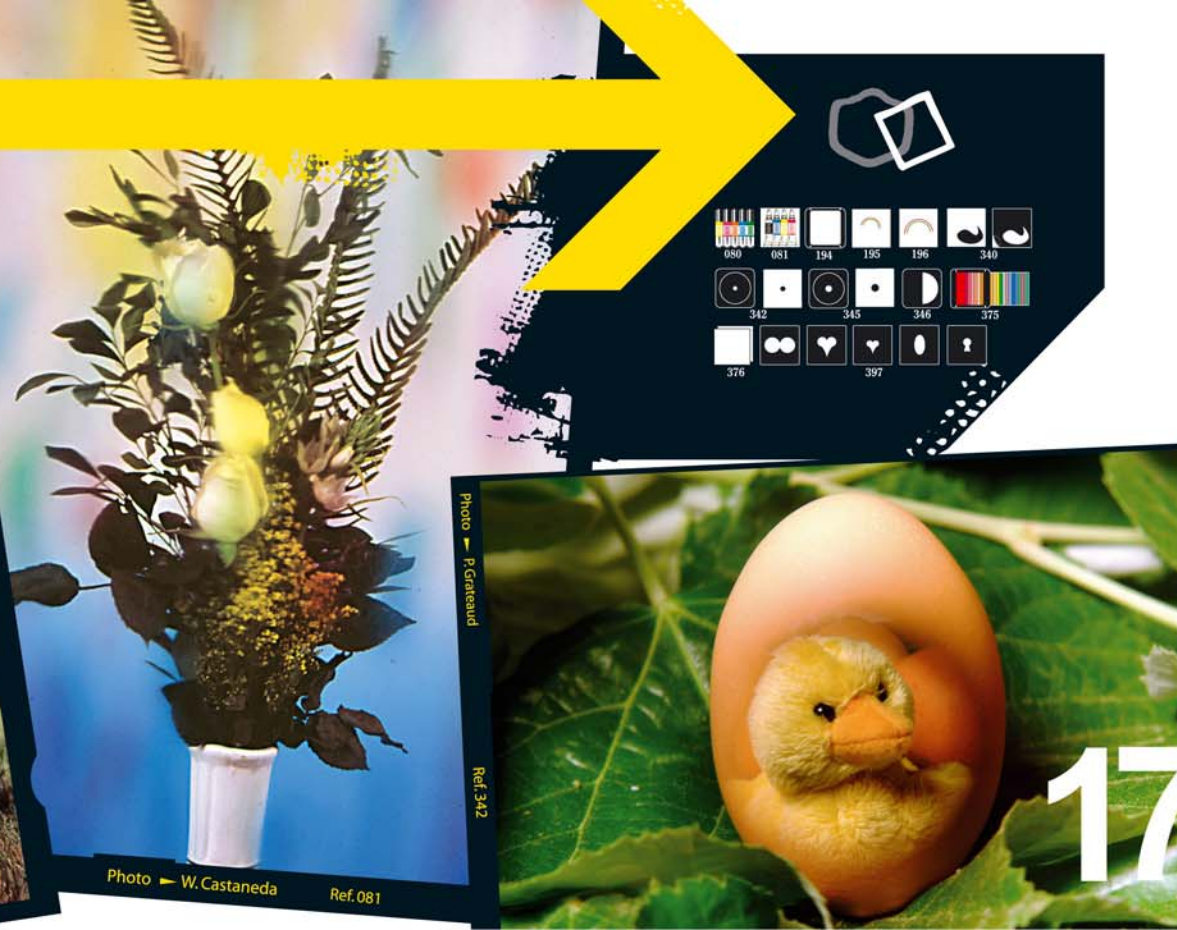
DIGITAL + FILM

> SPECIAL EFFECTS

Most filters are perfect in combination or addition to post production work. The digital world has made us to forget that filters are also stand alone tools where creativity can be executed **without a computer**. Come into the COKIN magic shop :

- > varnishes, brushes and tubes to reproduce the themes of impressionist paintings ;
- > custom-made rainbows ;
- > black frames for double and multiple exposure ;
- > romantic symbols, hearts, cheeky keyholes, all for framing ;
- > **hallucinating** gelatine colours.

**NO COMPUTER
NEEDED !**



> THE COKIN SYSTEM

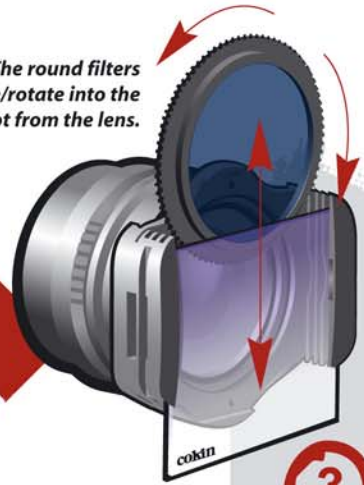


Screw the adaptor ring onto your lens...

1

♥ Same filters for all your lenses by just replacing your adaptor ring.
♥ Rotate, slide, decentre in all directions for more precision and creativity.

The round filters slide/rotate into the nearest slot from the lens.



3

...slide the filter-holder on the adaptor ring until it snaps in place...

2

...slide the filter (up to 3) into one of the filter-holder slots.

image.imagine

> THE COKIN FILTER-HOLDERS



The COKIN filter-holder - A - P - Z - X Series

Fits onto the camera lens by snapping on the adaptor ring to be screwed onto the lens. Make sure your adaptor ring corresponds to your lens diameter.

Filter solutions



A Series

Comprises a complete range of COKIN filters for standard lenses with diameters up to 62 mm. Recommended for focal lengths from 35mm onwards (35mm format). Filters are **67mm** wide.

P Series

For larger diameter lenses up to 82 mm. Recommended for focal lengths from 28mm onwards (35mm format). Specially adapted to today's digital SLRs. Filters are **84mm** wide.

Z-PRO Series

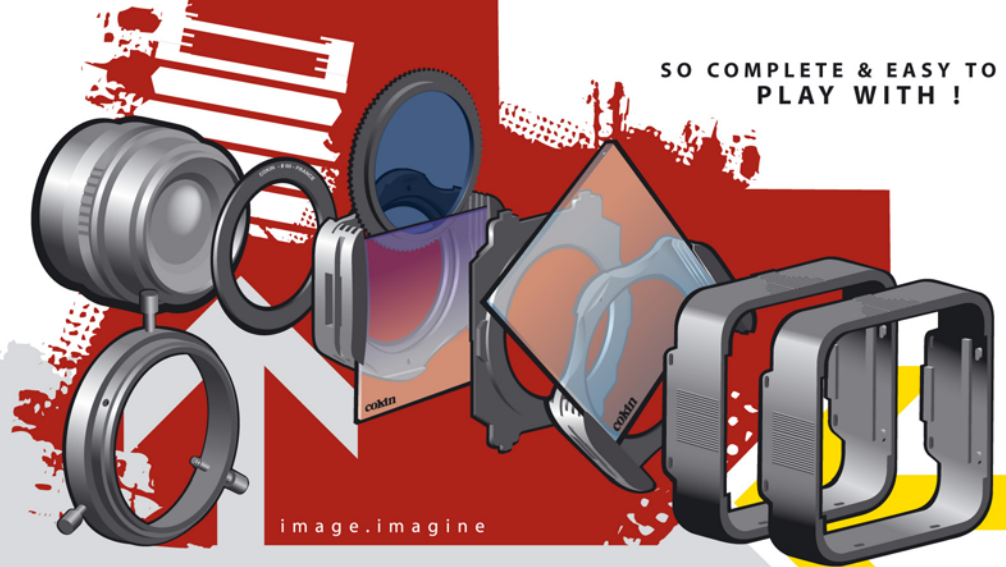
Specially adapted to **100mm** (4") filters and designed for medium format cameras as well as wide-angle lenses. Recommended for focal lengths from 20mm onwards (35mm format). For lenses up to 96 mm. This Series is also well adapted to prosumer and professional video cameras.

X-PRO Series

Specially designed for medium and large format cameras as well as super wide-angle lenses. Recommended for focal lengths from 15mm onwards (35mm format). This Series is also well adapted to prosumer and professional video cameras. For lenses up to 118 mm. Filters are **130mm** wide.

INTRO
COLOUR FILTERS
GRADUATED
CENTER SPOTS
DIFFUSERS
POLARIZERS
OPTICAL EFFECTS
SPECIAL EFFECTS
THE SYSTEM
ACCESSORIES
THE COKIN RANGE

DIGITAL + FILM



SO COMPLETE & EASY TO
PLAY WITH !

image.imagine

> THE COKIN ACCESSORY SYSTEM

The COKIN Creative System is well known for its versatility and relevance. The wide range of **smart accessories** are precious tools to add up the little something which will provide your images the unique touch to **make the difference**. Check out the possibilities of the COKIN SYSTEM, you will be amazed by its superb **creative possibilities**. The COKIN Accessory System is your **tool case, play with it !**

- Fully modular
- Complete tool system
- Really easy to use

image.imagine

A252/P252

Holder Cap - A & P Series

A filter-holder cap is particularly useful for all those who wish to leave permanently the filter-holder on the lens. This adaptable cover slides into the narrow slot nearest the filter-holder housing thus perfectly protecting the camera lens.

A253/P253

Ring Cap - A & P Series

A lens cap that fits onto the adaptor ring. The filter-holder can thus be changed rapidly from one lens to another, an adaptor ring remains on each lens, the cap thus protecting both ring and lens.

P499/X499

Universal Ring - P & X Series

For lenses with non-standard diameter or damaged thread. Attached to the outside of the lens, the universal ring will fit on all lenses with max. external diameter of 84 mm (P Series) or 118 mm (X-PRO Series).

A254/P254

Coupling Ring - A & P Series

The coupling ring enables you to attach a second filter-holder, thereby increasing the number of filters used. It slides into the filter-holder outer slot and is particularly useful for orientating square filters in different directions (graduated, multi-images filters etc.).

Extension Rings

Some wide-angle and video zoom lenses have a retractable lens assembly which means that the COKIN filter-holder may inhibit the use of some focal lengths. To remedy this situation, add one or several "extension rings" between the lens and the adaptor ring of the filter-holder.



INTRO
COLOUR FILTERS
GRADUATED SPOTS
DIFFUSERS
POLARIZERS
OPTICAL EFFECTS
SPECIAL EFFECTS
THE SYSTEM
ACCESSORIES
THE COKIN RANGE

DIGITAL + FILM

20

21

P299

Wide-Angle Holder - P Series

This extra slim holder helps to eliminate vignetting on "P" Series. Can hold 1 filter (can be a polarizer) and allows the use of filters with super wide-angle lenses (focal lengths under 20mm in 35mm format).



P249 - P362

A/P & Z/P Adaptors

The A/P adaptor lets you use "A" filters with a "P" holder. It is therefore not necessary to buy "P" filters if you already own equivalent "A" filters. Vignetting may nevertheless occur at short focal lengths, and you should therefore watch out for this. In the same way, the Z/P adaptor lets you use "Z" filters on a "P" Holder.



A255/P255

Modular Hood - A & P Series

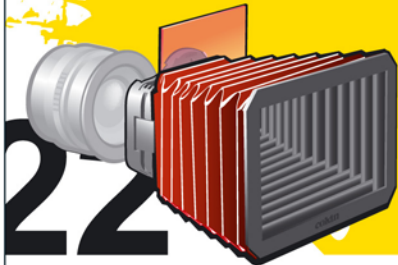
The COKIN modular lens hood intensifies contrasts and eliminates unwanted reflections. It fits simply onto the filter-holder by just pressing on the upper and lower parts of the lens hood. You can attach several modular hoods to one another, depending on the focal length of your lens. It is also a wonderful tool for more creativity.



350

Modular Bellows - A - P - Z - X Series

The COKIN Modular Bellows is a unique, flexible and self-supporting lens shade which can fit almost any camera available thanks to a simple COKIN adaptor ring. The bellows provides excellent control over the ambient light conditions and cuts the glare out for clean and sharp images. An integrated COKIN Filter-Holder is solidly fixed at the rear end of the bellows.



306

Wallets - A - P - Z - X Series

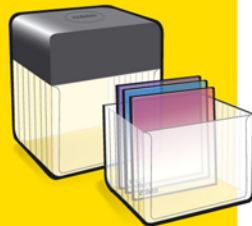
Very convenient and easy-to-use filter wallets. A room for up to 7 filters + filter-holder and adaptor rings. Removable compartments which, once removed, allows to place the 305 empty box for 10 filters according to the photographers' needs. With neck strap and belt attachment.



A305/P305

Storage Boxes - A & P Series

Very useful filter box to store and carry 10 COKIN filters.

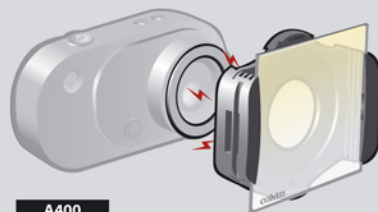


AUTOFOCUS ROTATION A & P Series

Remove the nipple at the base of the filter-holder for free rotation with autofocus lenses. You merely need to hold the filter-holder horizontal with just two fingers.



> FILTER-HOLDERS FOR COMPACT TYPE CAMERAS



A400

Magnetic-Holder - A Series

This innovative Magnetic Holder sticks easily by "magnetism" via a self adhesive magnetic ring to those lenses without thread and which couldn't accept filters up to now. You can then enjoy the full use of the COKIN filters on your compact-type digital camera or camcorder.

A300

Digital Shoe Holder - A Series

Adjustable holder that attaches to the tripod socket in the base of your camera and positions the filter-holder in front of your lens. The screw slides along the grooves of the Shoe filter-holder so as to allow correct positioning underneath the camera. The filter-holder mounts must be correctly positioned facing the lens so as to work properly once the filters are inserted. Then, once you have found the ideal position for the Holder, tighten the screw underneath the camera tripod socket.



> THE COKIN RANGE

REF	DESIGNATION	A	P	Z	X	F-STOP
001	Yellow	X	X	X	X	2/3
002	Orange	X	X	X	X	1-2/3
003	Red	X	X	X	X	3-1/3
004	Green	X	X	X	X	2-2/3
005	Sepia	X	X	X	X	3-2/3
006	Yellow Green	X	X	X	X	2/3
007	Infrared	X	X	X	X	6
020	Blue (80A)	X	X	X	X	2/3
021	Blue (80B)	X	X	X	X	1-2/3
022	Blue (80C)	X	X	X	X	1
023	Blue (82A)	X	X	X	X	1/3
024	Blue (82B)	X	X	X	X	2/3
025	Blue (82C)	X	X	X	X	2/3
026	Warm (81A)	X	X	X	X	1/3
027	Warm (81B)	X	X	X	X	1/3
028	Warm (81C)	X	X	X	X	1/3
029	Orange (85A)	X	X	X	X	2/3
030	Orange (85B)	X	X	X	X	2/3
031	Orange (85C)	X	X	X	X	1/3
035	Warm (81D)	X	X	X	X	2/3
036	FLW	X	X	X	X	1
037	Warm (81EF)	X	X	X	X	2/3
039	Warm (81Z)	X	X	X	X	1/3
045	Sepialight	X	X	X	X	3
046	FLD	X	X	X	X	2/3
047	Gold	X	X	X	X	1-2/3
050	Cyan	X	X	X	X	1/3
055	Star 16	X	X	X	X	0
056	Star 8	X	X	X	X	1/3
057	Star 4	X	X	X	X	1/3
058	Star 2	X	X	X	X	1/3

REF	DESIGNATION	A	P	Z	X	F-STOP
059	Softstar	X	X			1/3
060	C. Spot Incolor 1	X	X			1/3
061	C. Spot Incolor 2	X	X			1
062	C. Spot Grey 1	X	X			1,1/3
063	C. Spot Grey 2	X	X			2
064	C. Spot Violet	X	X			2,1/3
065	C. Spot Green	X	X			2,1/3
066	C. Spot Orange	X	X			1,2/3
067	C. Spot Blue	X	X			1,1/3
068	C. Spot Red	X	X			2
070	C. Spot WA Incolor 1	X	X	X		0
071	C. Spot WA Incolor 2	X	X	X		2/3
072	C. Spot WA Grey 1	X	X	X		1,1/3
073	C. Spot WA Grey 2	X	X	X		2
074	C. Spot WA Violet	X	X	X		1,2/3
075	C. Spot WA Green	X	X	X		1,2/3
076	C. Spot WA Orange	X	X	X		2
077	C. Spot WA Blue	X	X	X		1,2/3
078	C. Spot WA Red	X	X	X		2
079	C. Spot WA Pink	X	X	X		1/3
080	Color Varnish	X	X			-
081	Color Vaseline	X	X			-
082	Color Diffuser	X	X			-
086	Pastel 1	X	X	X	X	0
087	Pastel 2	X	X	X	X	0
088	Cold Color Diffuser	X	X	X	X	1/3
089	Warm Color Diffuser	X	X	X	X	1/3
091	Dreams 1	X	X	X	X	0
092	Dreams 2	X	X	X	X	0
093	Dreams 3	X	X	X	X	0
101	Close-up +1	X	X			0
102	Close-up +2	X	X			0
103	Close-up +3	X	X			0
111	Split-field +1	X	X			0
112	Split-field +2	X	X			0
113	Split-field +3	X	X			0
120	Gradual Grey G1	X	X	X		1,2/3
121	Gradual Grey G2 (NDB)	X	X	X		3
121L	Grad. Neutral Grey G2 Light (NDB)	X	X	X	X	1
121M	Grad. Neutral Grey G2 Medium (NDB)	X	X	X	X	2

REF	DESIGNATION	A	P	Z	X	F-STOP
121S	Grad. Neutral Grey G2 Soft (NDB)	X	X	X	X	3
121F	Grad. Neutral Grey G2 Full (NDB)	X	X	X	X	3
122	Gradual Blue B1	X	X	X	X	1,2/3
123	Gradual Blue B2	X	X	X	X	2
123L	Gradual Blue B2 Light	X	X	X	X	2/3
123S	Gradual Blue B2 Soft	X	X	X	X	1,2/3
123F	Gradual Blue B2 Full	X	X	X	X	2,1/3
124	Gradual Tobacco T1	X	X	X	X	2
125	Gradual Tobacco T2	X	X	X	X	3
125L	Gradual Tobacco T2 Light	X	X	X	X	2
125S	Gradual Tobacco T2 Soft	X	X	X	X	2
125F	Gradual Tobacco T2 Full	X	X	X	X	1,2
126	Gradual Mauve M1	X	X	X	X	1,1/3
127	Gradual Mauve M2	X	X	X	X	2,2/3
128	Gradual Pink P1	X	X	X	X	2
129	Gradual Pink P2	X	X	X	X	3
130	Gradual Emerald E1	X	X	X	X	1,2/3
131	Gradual Emerald E2	X	X	X	X	3
132	Gradual Yellow Y1	X	X	X	X	2
133	Gradual Yellow Y2	X	X	X	X	3
138	Gradual FLW	X	X	X	X	1
139	Gradual FLD	X	X	X	X	2/3
140	Oval C. Spot White	X	X	X	X	1/3
141	Oval C. Spot Black	X	X	X	X	1/3
142	Net Filter 1 White	X	X	X	X	1/3
143	Net Filter 1 Black	X	X	X	X	1/3
144	Net Filter 2 White	X	X	X	X	1/3
145	Net Filter 2 Black	X	X	X	X	1/3
148	Wedding 1 White	X	X	X	X	1-1/3
149	Wedding 1 Black	X	X	X	X	1,2/3
150	Gradual Fog 1	X	X	X	X	1/3
151	Gradual Fog 2	X	X	X	X	1/3
152	Neutral Grey ND2	X	X	X	X	1
153	Neutral Grey ND4	X	X	X	X	2
154	Neutral Grey ND8	X	X	X	X	3
155	Neutral Grey ND100	X	X	X	X	6,2/3
156	Neutral Grey NDx	X	X	X	X	13
160	Linear Polarizer	X	X	X	X	1,2/3
161	Polacolor Red	X	X	X	X	1
162	Polacolor Blue	X	X	X	X	1,1/3

REF	DESIGNATION	A	P	Z	X	F-STOP
163	Polacolor Yellow	X	X	X	X	1/3
164	Circular Polarizer	X	X	X	X	1,2/3
170	Variacolor Red/Green	X	X	X	X	3,1/3
171	Variacolor Red/Blue	X	X	X	X	2,1/3
172	Variacolor Pink/Orange	X	X	X	X	2,2/3
173	Variacolor Blue/Yellow	X	X	X	X	2,1/3
174	Variacolor Blue/Lime	X	X	X	X	2,1/3
185	Radial Zoom	X	X	X	X	1/3
186	Rainstop	X	X	X	X	1/3
188	Softspot	X	X	X	X	0
189	Sunspot	X	X	X	X	1/3
194	Gelatine Holder	X	X	X	X	2
195	Rainbow 1	X	X	X	X	0
196	Rainbow 2	X	X	X	X	0
197	Sunset 1	X	X	X	X	1/3
198	Sunset 2	X	X	X	X	1
201	Multi-image x5	X	X	X	X	-
202	Multi-image x7	X	X	X	X	-
203	Multi-image x13	X	X	X	X	-
204	Multi-image x25	X	X	X	X	-
209	Multi-parallel	X	X	X	X	-
217	Speed	X	X	X	X	1/3
217	Super Speed	X	X	X	X	-
219	Prism	X	X	X	X	-
220	Mirage	X	X	X	X	-
230	U.V. Sky Neutral	X	X	X	X	0
231	U.V. Y	X	X	X	X	0
232	Skylight 1B	X	X	X	X	0
340	Creative Mask	X	X	X	X	-
342	Double Mask 1	X	X	X	X	-
345	Double Mask 2	X	X	X	X	-
346	Double Exposure	X	X	X	X	-
375	Creative Filter Set	X	X	X	X	-
376	Basic Filter Set	X	X	X	X	-
397	Pre-shaped Frames	X	X	X	X	-
660	Gradual Fluo Yellow 1	X	X	X	X	1/3
661	Gradual Fluo Yellow 2	X	X	X	X	1/3
662	Gradual Fluo Orange 1	X	X	X	X	1
663	Gradual Fluo Orange 2	X	X	X	X	1,2/3
664	Gradual Fluo Red 1	X	X	X	X	1,1/3

REF	DESIGNATION	A	P	Z	X	F-STOP
665	Gradual Fluo Red 2	X	X	X	X	2
666	Gradual Fluo Blue 1	X	X	X	X	1,2/3
667	Gradual Fluo Blue 2	X	X	X	X	2,2/3
668	Gradual Fluo Mauve 1	X	X	X	X	2
669	Gradual Fluo Mauve 2	X	X	X	X	2,2/3
670	Gradual Fluo Pink 1	X	X	X	X	1
671	Gradual Fluo Pink 2	X	X	X	X	2,2/3
672	C. Spot Pink/Blue	X	X	X	X	2,2/3
673	C. Spot Yellow/Pink	X	X	X	X	1
674	C. Spot Blue/Yellow	X	X	X	X	1,2/3
694	Sunsoft	X	X	X	X	1
695	Chompagne	X	X	X	X	2/3
696	Softwarm	X	X	X	X	1/3
697	Diffuser Warm	X	X	X	X	1/3
700	Cyan CC Filter (CC05C)	X	X	X	X	0
701	Cyan CC Filter (CC10C)	X	X	X	X	1/3
703	Cyan CC Filter (CC20C)	X	X	X	X	1/3
705	Cyan CC Filter (CC30C)	X	X	X	X	1/3
707	Cyan CC Filter (CC40C)	X	X	X	X	2/3
709	Cyan CC Filter (CC50C)	X	X	X	X	2/3
710	Magenta CC Filter (CC05M)	X	X	X	X	0
711	Magenta CC Filter (CC10M)	X	X	X	X	1/3
713	Magenta CC Filter (CC20M)	X	X	X	X	1/3
715	Magenta CC Filter (CC30M)	X	X	X	X	2/3
717	Magenta CC Filter (CC40M)	X	X	X	X	2/3
719	Magenta CC Filter (CC50M)	X	X	X	X	1
720	Yellow CC Filter (CC05Y)	X	X	X	X	0
721	Yellow CC Filter (CC10Y)	X	X	X	X	0
723	Yellow CC Filter (CC20Y)	X	X	X	X	1/3
725	Yellow CC Filter (CC30Y)	X	X	X	X	1/3
727	Yellow CC Filter (CC40Y)	X	X	X	X	1/3
729	Yellow CC Filter (CC50Y)	X	X	X	X	1/3
820	Diffuser Light	X	X	X	X	0
830	Diffuser 1	X	X	X	X	0
840	Diffuser 2	X	X	X	X	0
850	Diffuser 3	X	X	X	X	0

ADAPTOR RINGS	A	P	Z	X
36 mm - th 0.75	X			
37 mm - th 0.75	X			
39 mm - th 0.50	X			
40.5 mm - th 0.50	X			
41 mm - th 0.50	X			
41 mm - th 0.75	X			
42 mm - th 0.50	X			
42 mm - th 0.75	X			
43 mm - th 0.75	X			
43.5 mm - th 0.75	X			
44 mm - th 0.75	X			
46 mm - th 0.75	X			
48 mm - th 0.75	X	X		
49 mm - th 0.75	X	X	X	
52 mm - th 0.75	X	X	X	
54 mm - th 0.75	X	X	X	
55 mm - th 0.75	X	X	X	
58 mm - th 0.75	X	X	X	
62 mm - th 0.75	X	X	X	X
67 mm - th 0.75	X	X	X	X
72 mm - th 0.75	X	X	X	X
77 mm - th 0.75	X	X	X	X
82 mm - th 0.75	X	X	X	X
86 mm - th 0.75	X	X	X	X
86 mm - th 1.00	X	X	X	X
95 mm - th 1.00	X	X	X	X
96 mm - th 1.00	X	X	X	X
105 mm - th 0.75	X	X	X	X
105 mm - th 1.00	X	X	X	X
112 mm - th 0.75	X	X	X	X
112 mm - th 1.00	X	X	X	X
112 mm - th 1.50	X	X	X	X
Hasselblad B50	X	X	X	X
Hasselblad B60	X	X	X	X
Hasselblad B70	X	X	X	X
Rollei V1	X	X	X	X
Universal	X	X	X	X

Other diameters
via step rings

NOTA : The above data are for information only. Figures can be altered depending on shooting conditions (light, flash, type of lens, etc.)

INTRO
COLOUR FILTERS
GRADUATED
CENTER SPOTS
DIFFUSERS
POLARIZERS
OPTICAL EFFECTS
SPECIAL EFFECTS
THE SYSTEM
ACCESSORIES
THE COKIN RANGE

DIGITAL + FILM



> THE COKIN RANGE



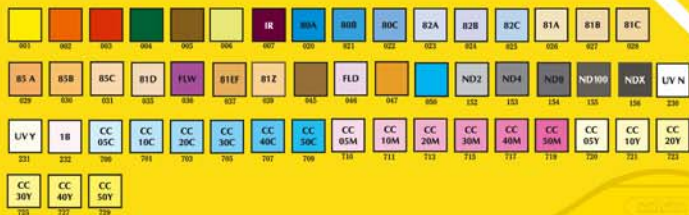
"A" Series
Ø up to 62 mm

"P" Series
Ø up to 82 mm

"Z" Series
Ø up to 96 mm

"X" Series
Ø up to 118 mm

COKIN > COLOUR - COLORÉS



COKIN > GRADUATED - DÉGRADÉS



COKIN > CENTER SPOTS - CENTRE SPOTS



COKIN > DIFFUSERS - DIFFUSEURS



COKIN > POLARIZERS - POLARISEURS



COKIN > OPTICAL EFFECTS - EFFETS OPTIQUES



COKIN > SPECIAL EFFECTS - EFFETS SPECIAUX



INTRO
COLOUR FILTERS
GRADUATED
CENTER SPOTS
DIFFUSERS
POLARIZERS
OPTICAL EFFECTS
SPECIAL EFFECTS
THE SYSTEM
ACCESSORIES
THE COKIN RANGE

cokin[®]
image . imagine



COKIN S.A.
50-52, rue des Solets
SILIC 457
94593 RUNGIS CEDEX
FRANCE



Tel. : ++33(0) 41 73 42 42
Fax : ++33(0) 41 73 42 40

3W cokin.com